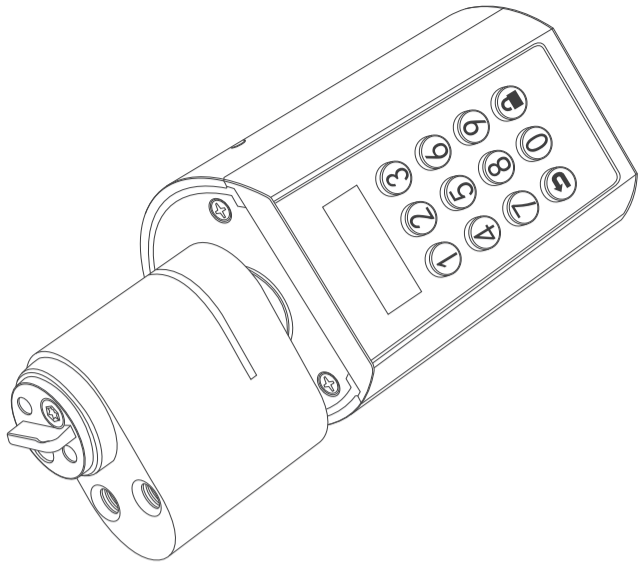


# PCB10EBL46 Instruction

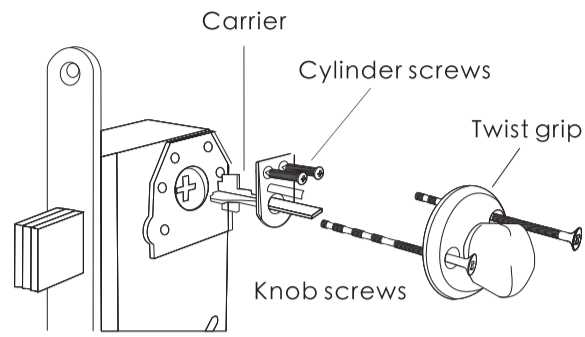
English



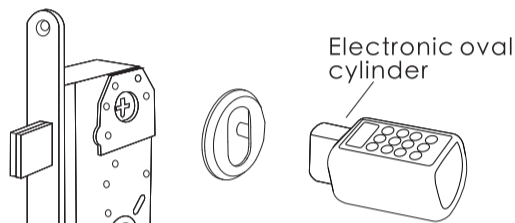
## Catalogue

- Installation instructions .....01
- Accessories list (TOOL BOX) .....02
- Install battery
- Product Components .....03
- 1.Passcode: flow chart .....04
- 2.RFID card: Flow char.....05
- 3.Other settings: Flow chart
- Unlock and lock .....08
- FAQ
- Bluetooth activation and login instructions..09
- Select "Android/iOS" to download
- Log in to the app
- Bind the device .....10
- Specifications.....11
- Operating instruction

### Installation instructions



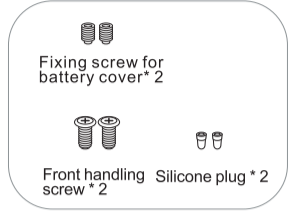
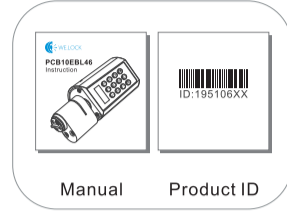
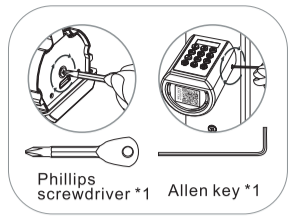
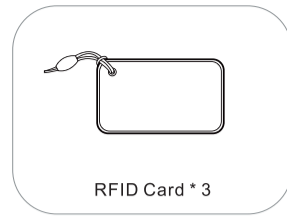
Indvendig side



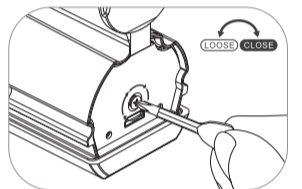
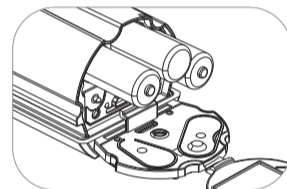
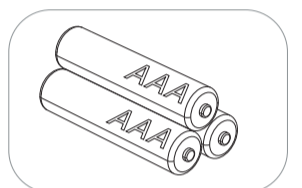
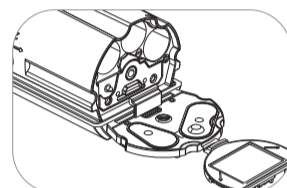
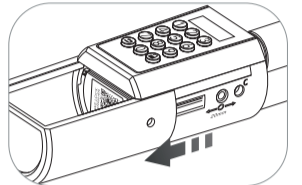
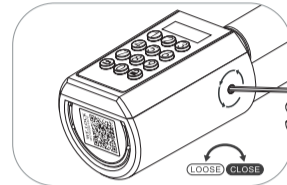
Udvendig side

### Accessories list (TOOL BOX)

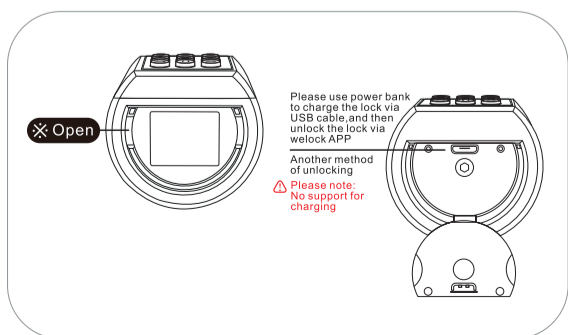
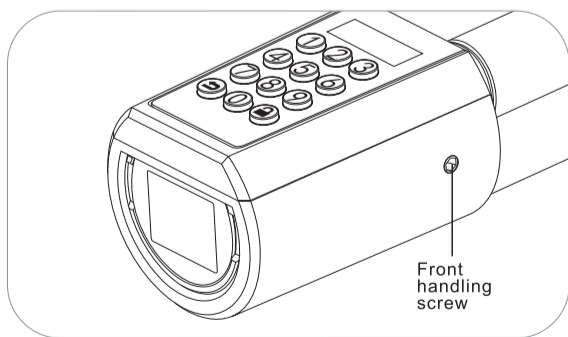
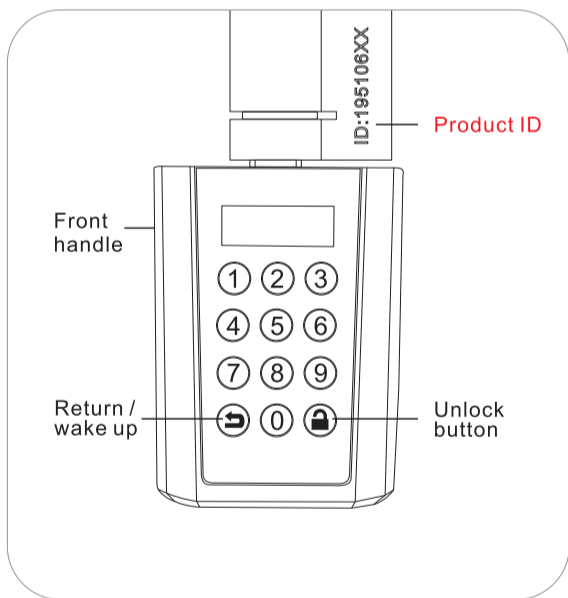
If there is a lack of accessories, please contact customer service in time.



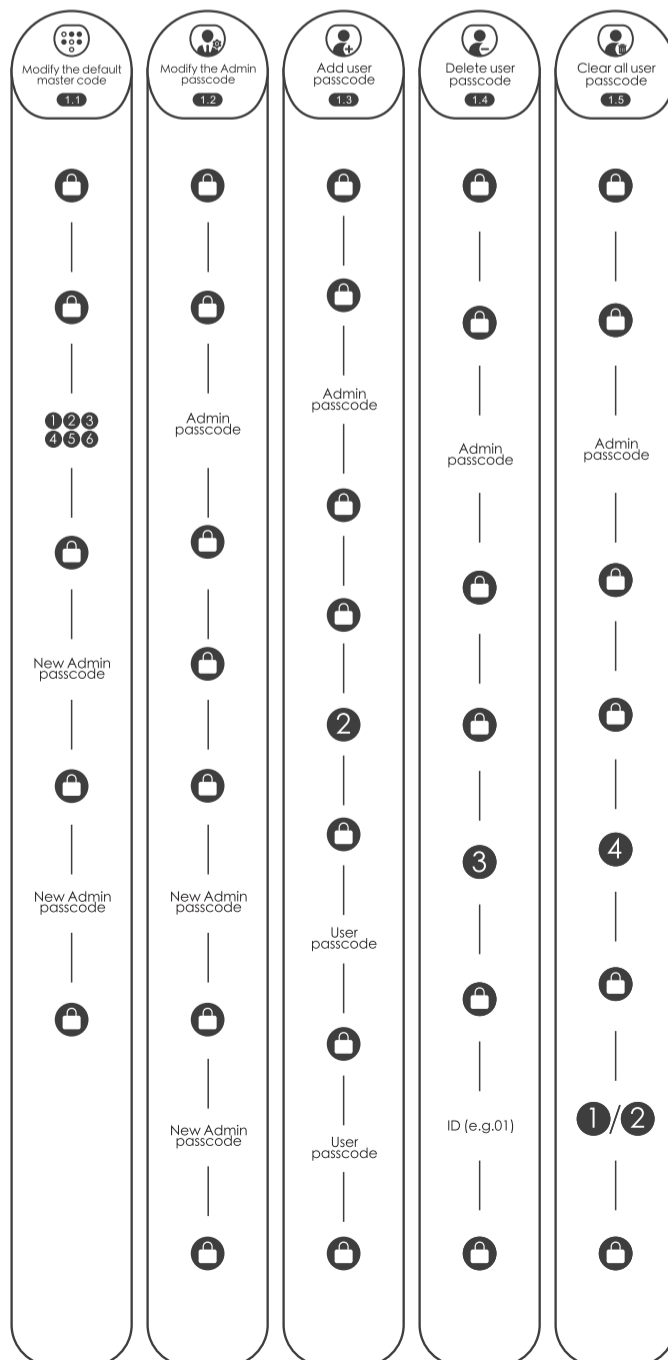
### Install battery



### Product Components

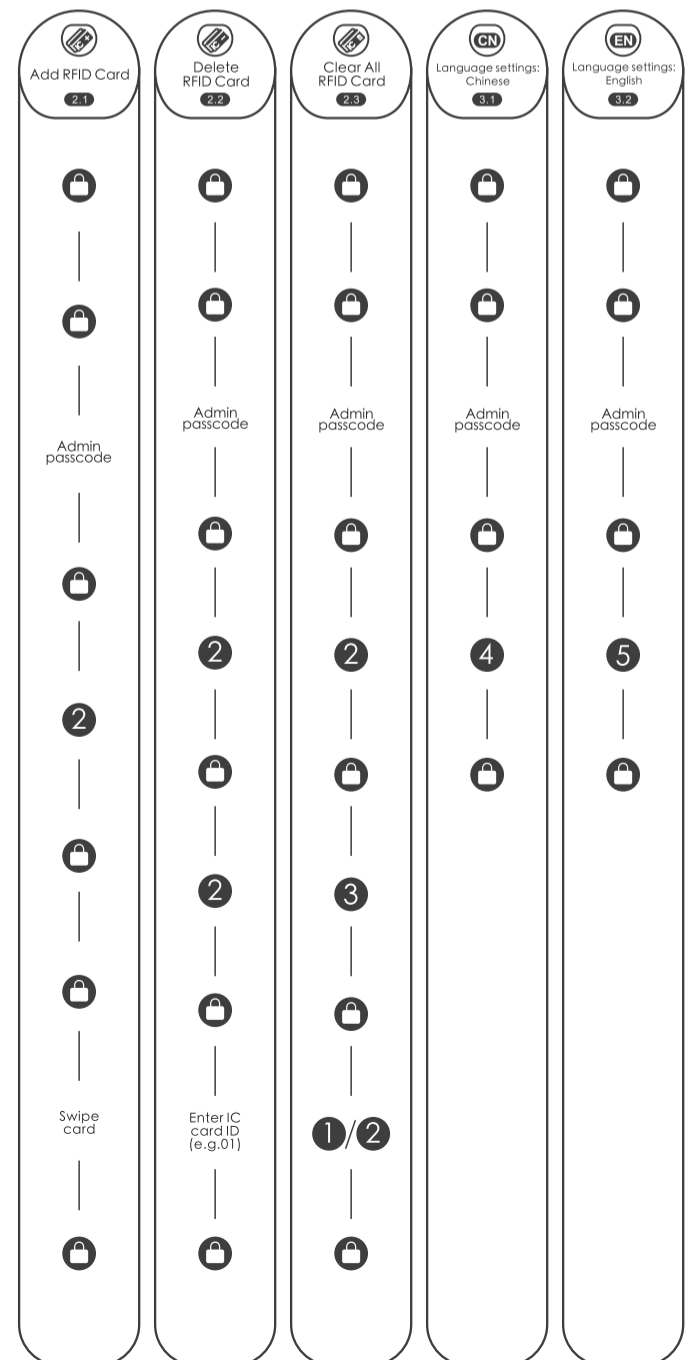


### 1.Passcode: flow chart

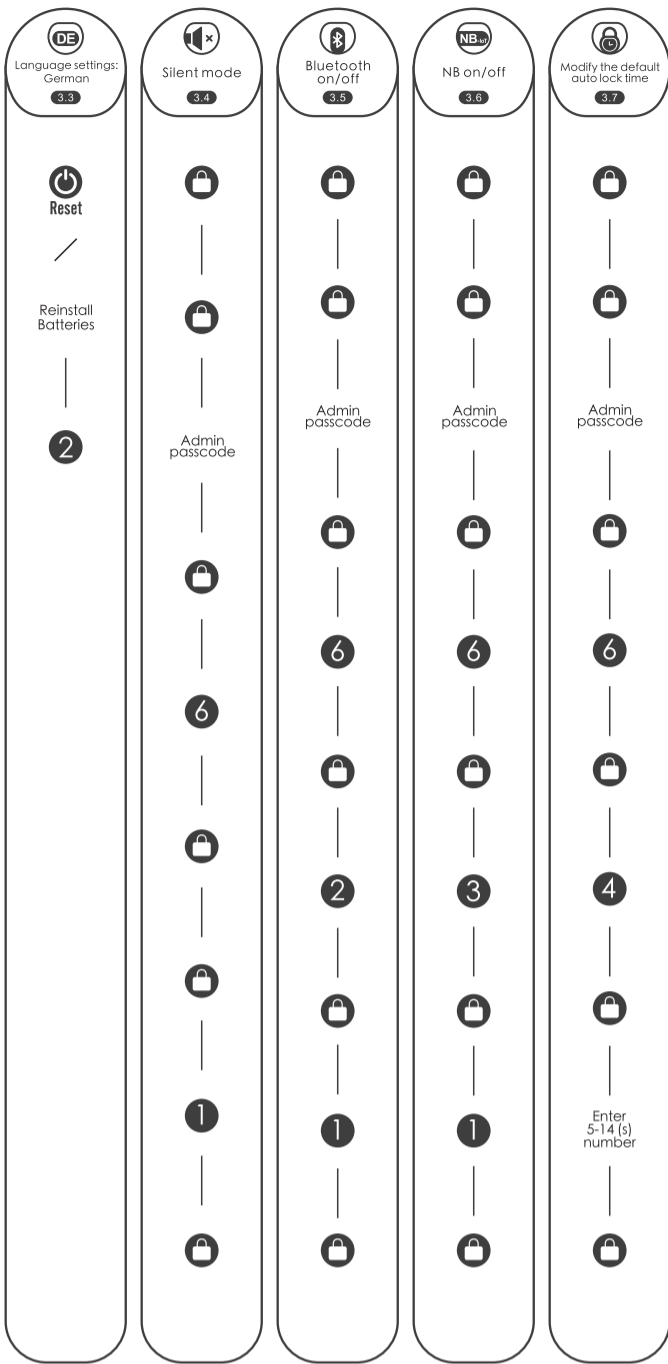


### 2.RFID card: Flow char

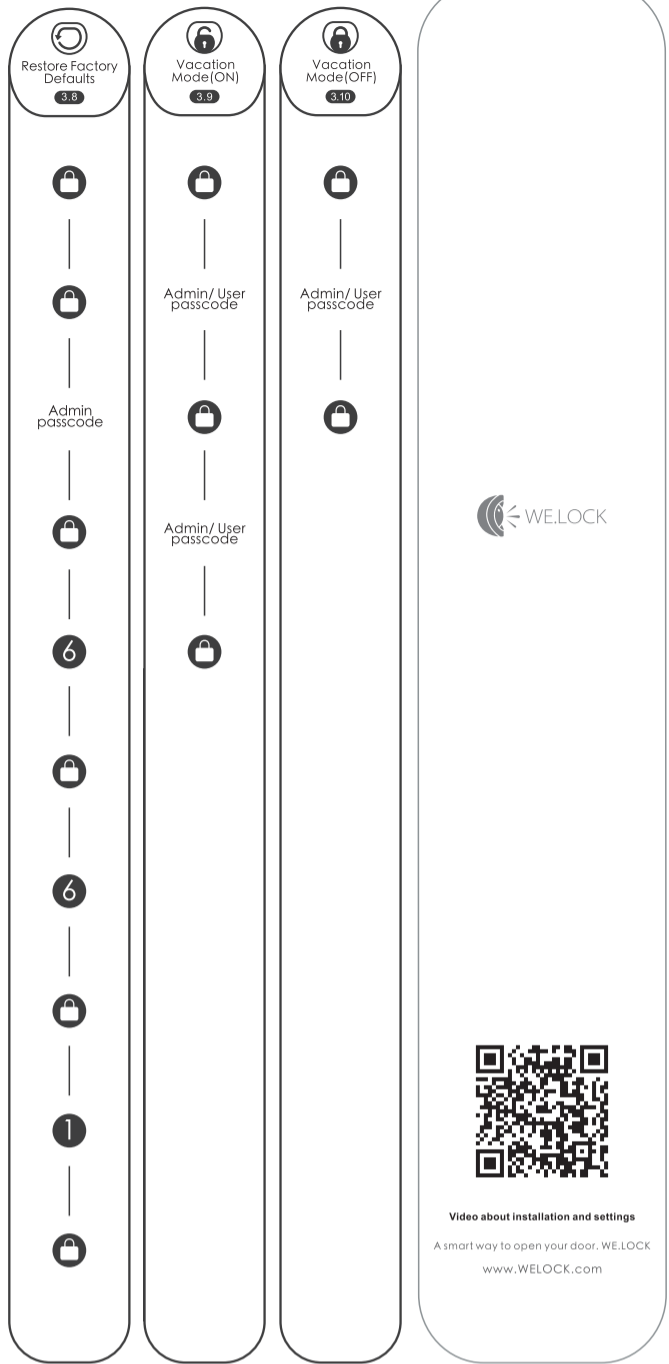
### 3.Other settings: Flow chart



3.Other settings: Flow chart

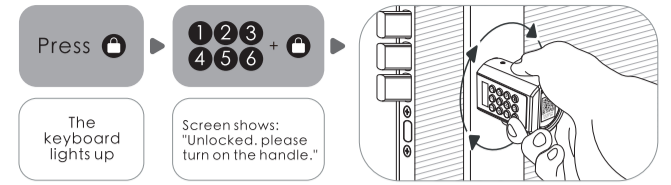


3.Other settings: Flow chart



Unlock and lock

Unlock the door from outside



The knob can be rotated 360degree freely after locked. To protect the lock not bedamaged by torsion forcefully.

**Low battery prompt:**  
After waking up, the screen displays:  
After 3 "beep beep beep" beeps The screen prompts: "Battery Low".

**Battery Low**  
Please replace the battery promptly when the above message appears.

FAQ

- **What should I do when I receive the lock?**  
When you received the lock, please modify the default password "123456" to your own admin password first, so please keep it in your mind.
- **Where can I find the lock ID?**  
Please find the lock ID with 8 digits number on the middle of lock, or find it on packing box.
- **When will the low battery alarm?**  
The battery is below 20%.
- **What is the USB backup key for?**  
USB backup key is spare key, for emergency situations, like when the lock is broken or battery run out, then you can use power bank to charge the lock via USB cable, then use our app to unlock the lock.
- **How can contact customer service?**  
Please contact this email: Service@WelockGlobal.com

Bluetooth activation and login instructions

Scan the QR code on the lock



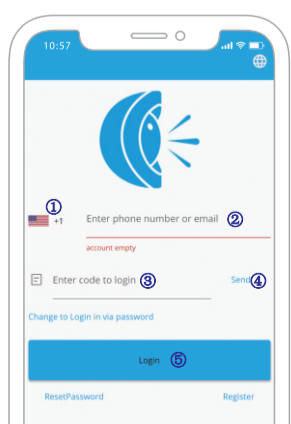
Download app

Select "Android/iOS" to download



Log in to the app

- 1 Select your country/region
- 2 Enter the phone number/email to get the verification code
- 3 Click"Send"
- 4 Enter the verification code after receiving the message
- 5 Click"Login"



Bind the device



Specifications

Brand	WE.LOCK
Applicable door types	Wooden doors, Interior doors
Adjustable range	55-105 mm
Operating Temperature	-25°C - 60°C
Pressing Cycle Times	100,000 Times
Material of handle	Zine Alloy
Way to unlock	Passcode / IC card / Bluetooth
Battery Type	3*AAA Battery
Power input	4V-6V
Battery Replacement	Replaceable
Color	Silver/ Black
Battery Life	>1 year

Operating instruction

- 1) Enter the wrong passcode 5 times continuously . the system is locked for three minutes and cannot operate.
- 2) Press the power button to wake up the keyboard+10 digits temporary passcode. Enter the wrong passcode 5 times continuously, the system is locked for three minutes and cannot operate. Temporary passcode generation needs to be done in the App. The time on the screen should be the same as the time on the phone, otherwise the temporary passcode will be invalid.
- 3) Press the power button to wake up the keyboard+ swipe the IC cards. Swipe the unmatched card 5 times continuously, the system is locked for three minutes and cannot operate. Any IC card can unlock the door in factory state.
- 4) Bind the lock on APP. Bind the lock on APP via Bluetooth, click "unlock", and the phone time will be synchronized to the lock via Bluetooth.